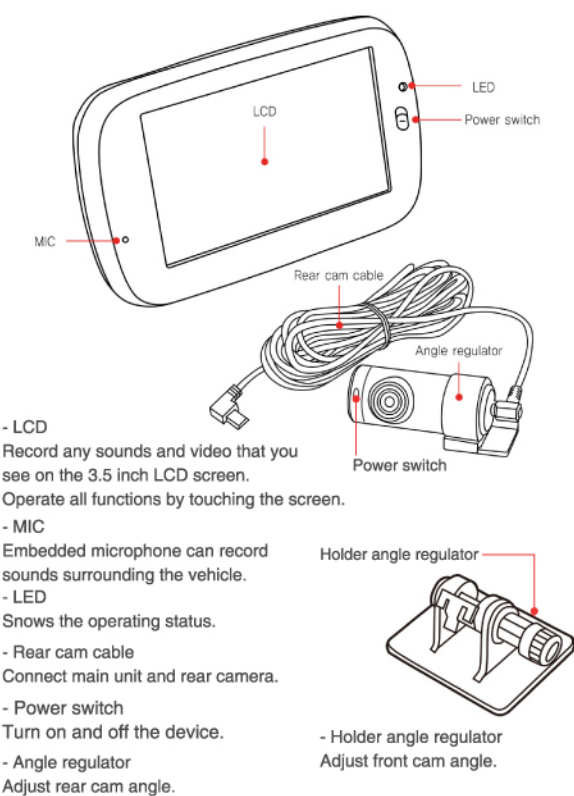


## i520WF Dual Camera Driving Recorder Quick Start Guide

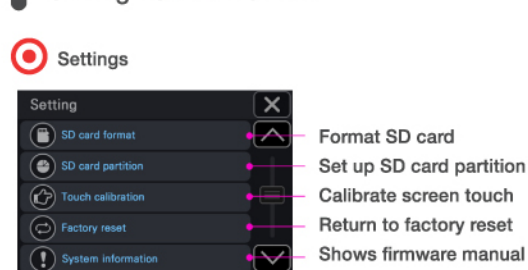
### External Appearance



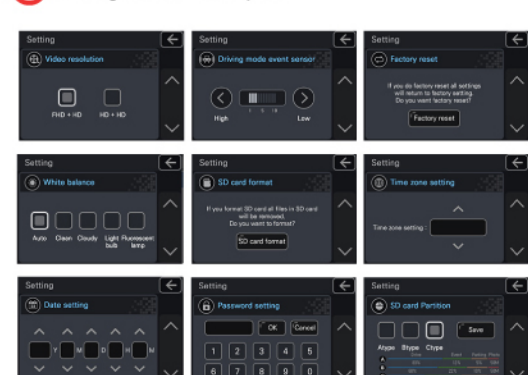
### Main Screen Guide



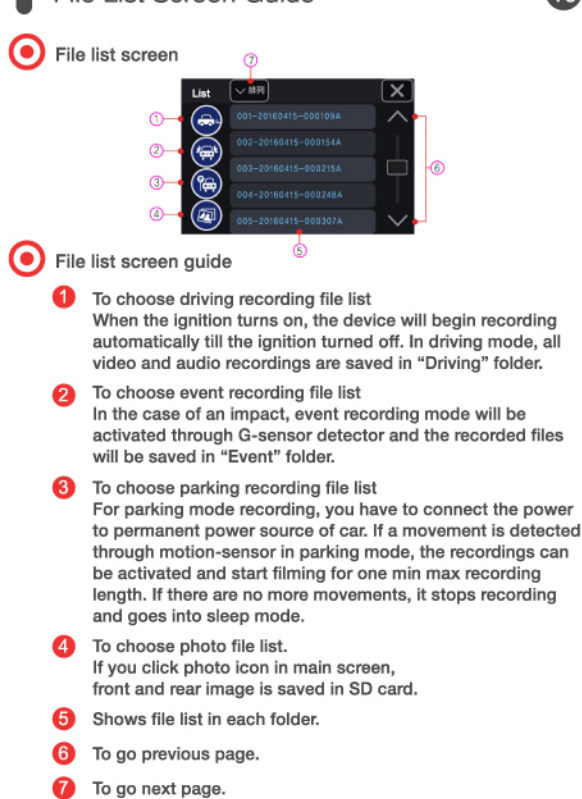
### Settings Screen Guide



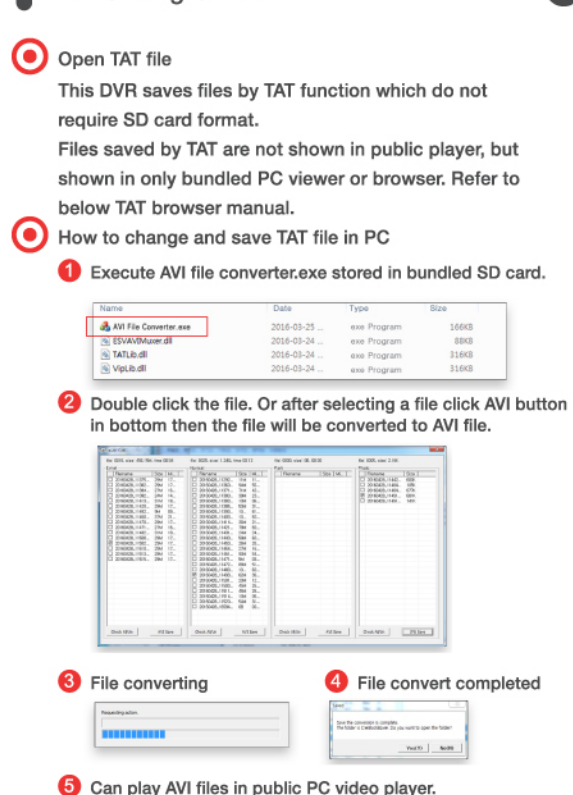
### Settings Screen examples



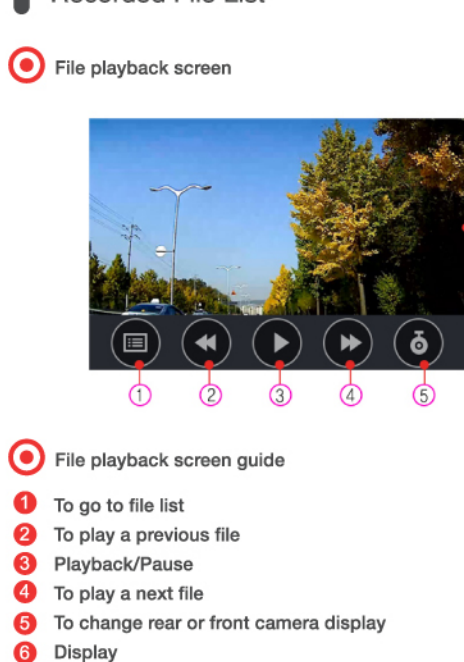
### File List Screen Guide



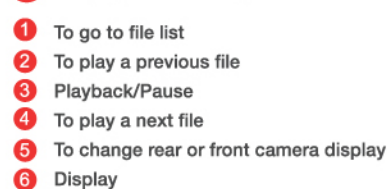
### File Saving Guide



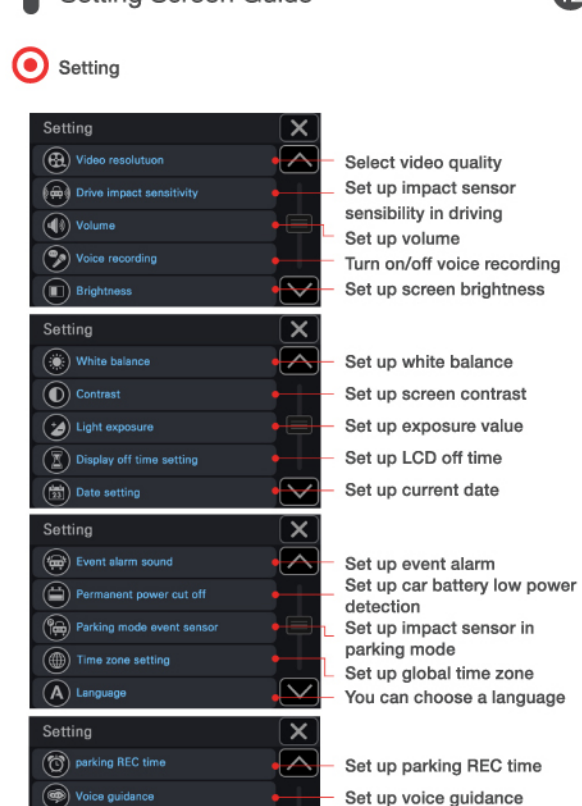
### Recorded File List



### File playback screen guide



### Setting Screen Guide



### Specifications

• Video type	Front Full HD (1080p)/30fps, Rear Full HD 1080p/25fps
• WIFI	iOS app, Android app
• Audio	MIC built in
• Screen	3.5inch(480x320 pixels) full touch LCD
• Micro SD card	Support up to 128GB Class 10 Micro SDXC (Suggest to use Micro SDXC write 90MB/s or higher) Format Free
• GPS	External smart GPS. Optional (not included)
• Recording mode	Driving/Event/Parking/Photo
• Power input	12V ~24V (12V@230mA)
• G-sensor	3axis gravity sensor
• Motion sensor	Detect motion in parking mode
• Memory format	TAT included Possible to format in settings.
• Security LED	Front side
• Video playback	In main unit LCD. Bundled PC viewer
• Low power prevent	Detect car battery low power to prevent discharge
• Auto power off	In abnormal high temperature. DVR power off automatically.
• Working temperature	-10°C ~ 60°C
• Size	110 x 68 x 17 (mm / W/D/H)

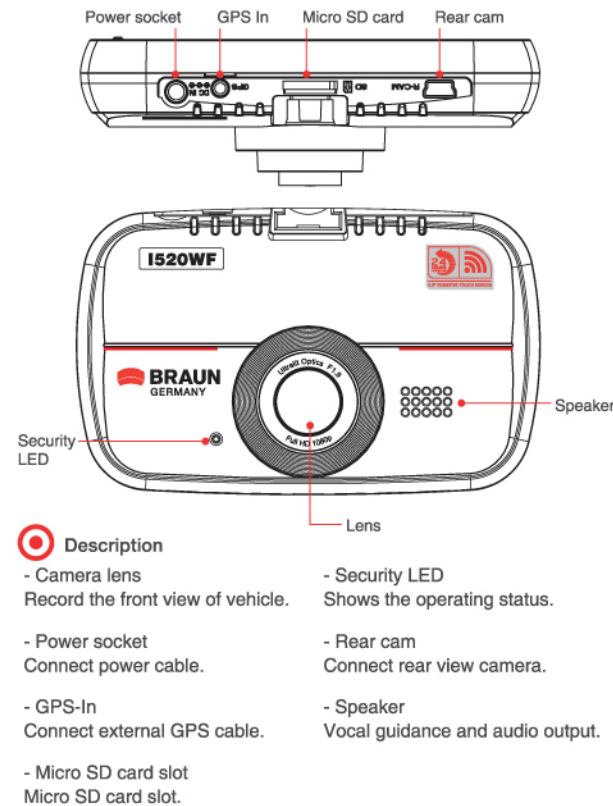
### Getting Started

- Before use
  - This manual simply explain functions to use the DVR.
  - Due to the improvement in better quality of the product, the real designs and specifications are subject to change without notice.
  - Please read this manual carefully and follow its instructions.
  - The information in this manual may change without prior notice.
  - Our DVR also called vehicle recorder, it can record your driving process including images, voices etc.
  - According to the different conditions, video or audio recording cannot work properly.
  - Please use this product just for the reference of checking the reference of checking the recordings purpose only while you are driving.
- Serial number
  - Product serial number.
  - Attached on the lower surface of the product.

### Package Components

- Due to improvement in better quality and performance of the product, the real components are subject to change without notice.
- Bundle
    - Main unit
    - Quick start & APP guide
    - Micro SD card
    - Mount holder
    - Cable holder
    - Micro SD card reader
    - Hardwiring Power Cable
    - Rear Camera
  - Option
    - Optional External GPS (not included)

### External Appearance



### Self Check List

- Video recording does not work  
Check whether SD card is inserted properly. SD card has its own life time. If you use it too long time it could not work well.
- Voice recording does not work  
Check whether voice REC function is activated. Check that MIC hole is not blocked by anything.
- There is no power on the device  
Check the power switch on. Reconnect the offered power cable. If power connection have no problem, check the cable fuse.
- LCD screen goes dark  
After car engine starts LCD turns on and off as some seconds go on. If you touch any place on LCD, it turns on. If it does not turn on, call after service center.
- GOOGLE map does not display on the screen  
This device use external GPS antenna. Check the GPS antenna cables are connected well. Check that there is nothing to block GPS signal reception.
- Rear camera does not work  
Check whether the R-cam cable is connected well to the device. Check there is nothing around camera lens.
- LCD screen goes dark  
Tinted window glass can affect to the screen brightness. Check the better position and fix again the device. Or you can adjust the brightness in setting, or through PC viewer program.